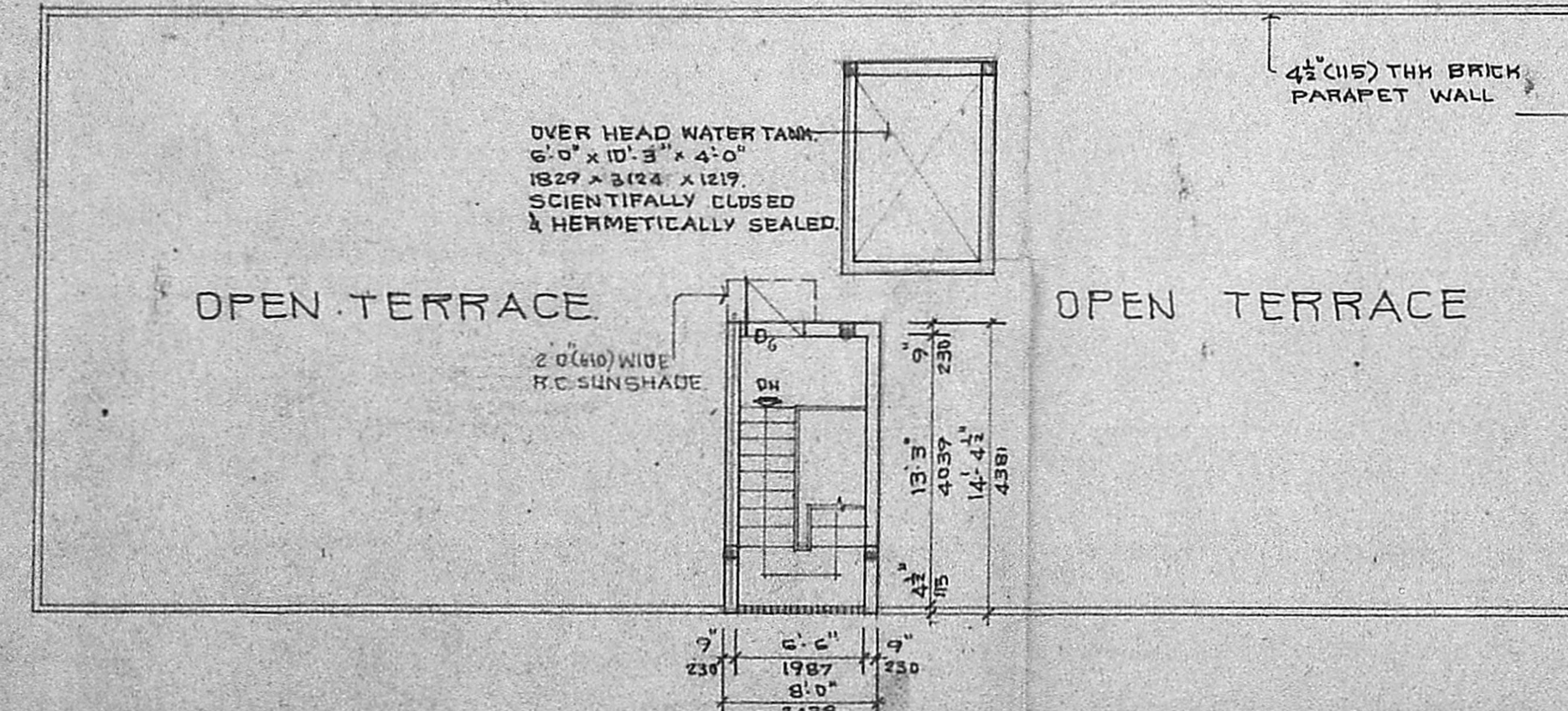
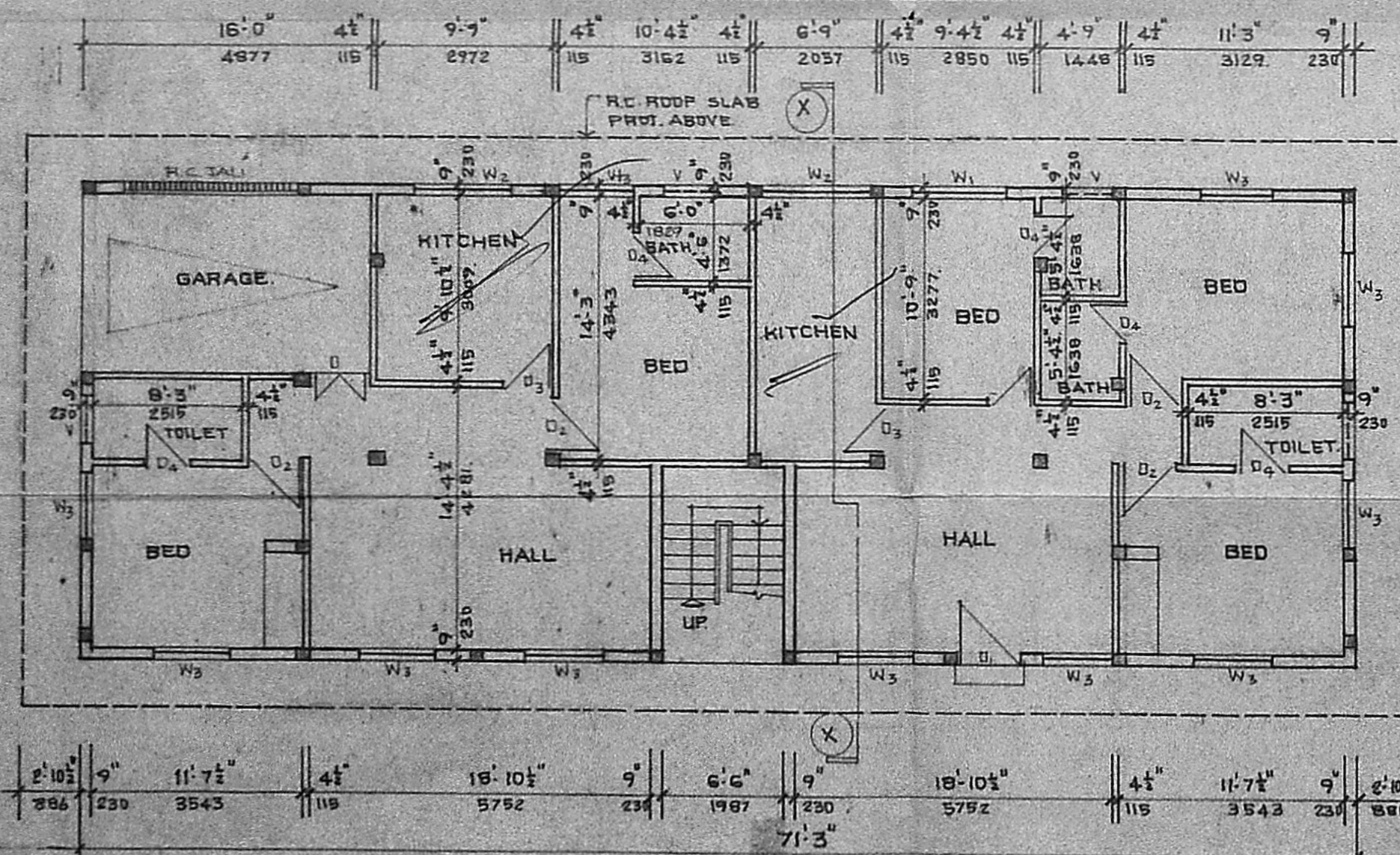


FRONT ELEVATION

SECTION XX



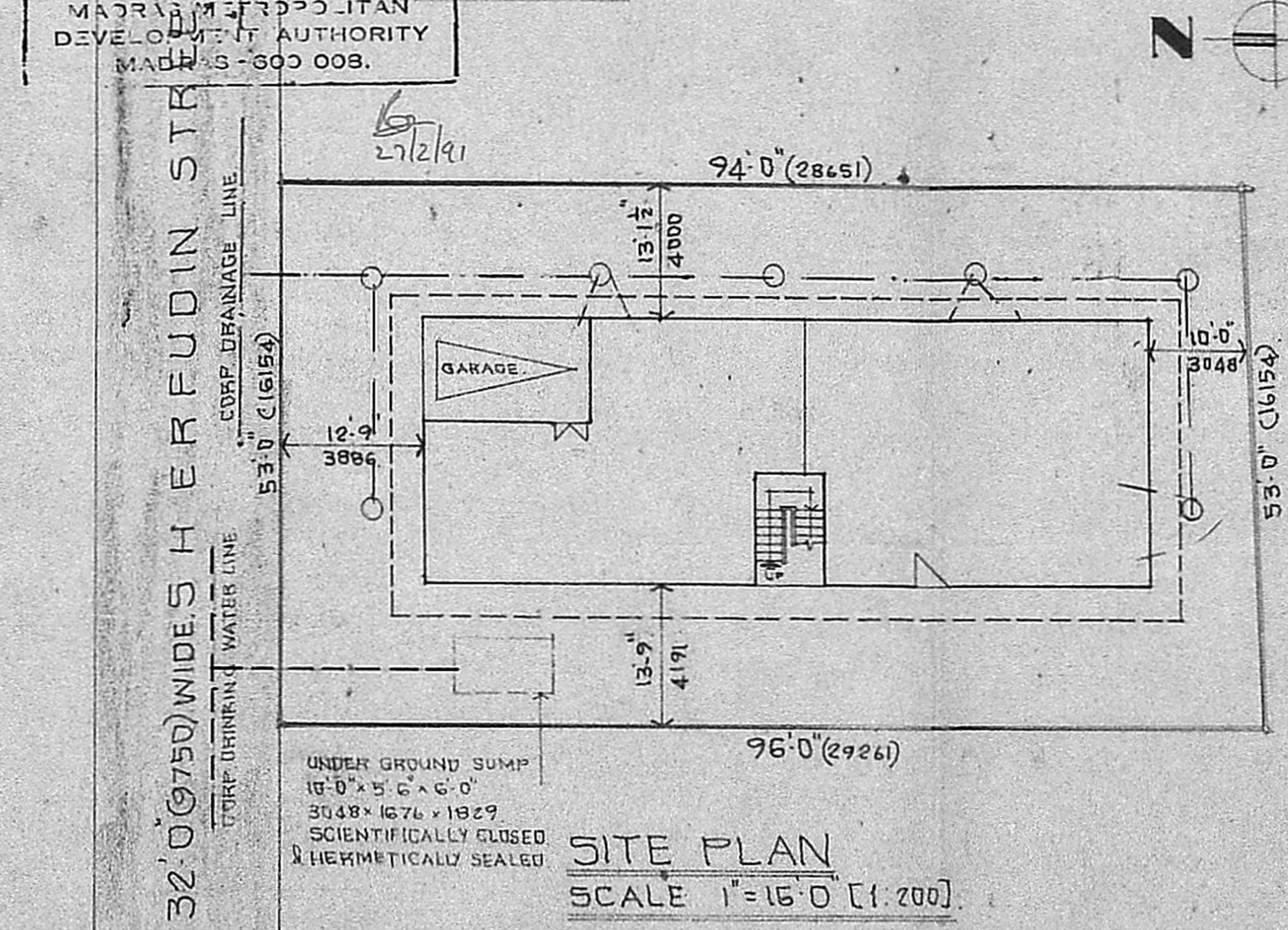
TERRACE FLOOR PLAN



GROUND FLOOR PLAN

Planning Permit No. 21/2000/17
APPROVED
 SUBJECT TO THE CONDITIONS IN THIS OFFICE LETTER.
 No. 15/15/1987 Date 5.3.1987
 ok
 FOR MEMBER SECRETARY TO SCALE
 MADRAS MUNICIPAL CORPORATION
 DEVELOPMENT AUTHORITY
 MADEAS-600 008.

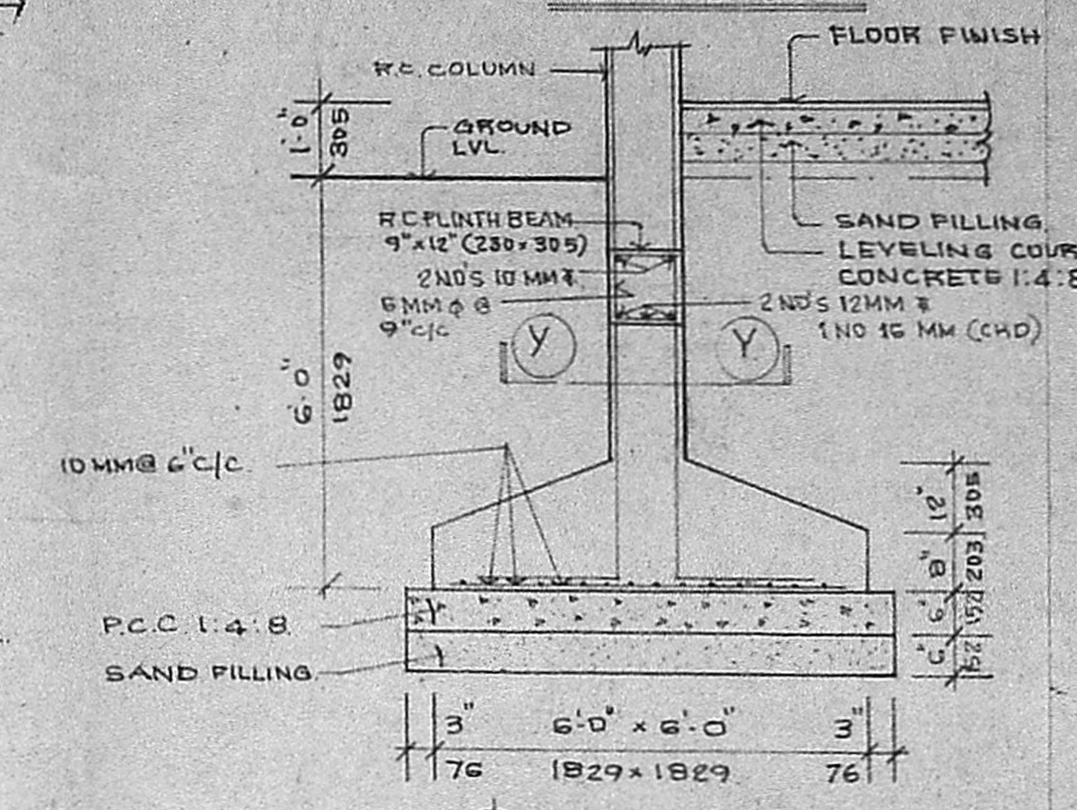
TOPO PLAN TO SCALE



SITE PLAN SCALE 1"=16'-0" [1:200]

COLUMN DETAILS:
 SIZE: 9" x 9" (230 x 230)
 VERTICAL: 6 NOS 16 MM # 5
 STIRRUPS: 6 MM @ 9" C/C

SECTION YY



FOUNDATION DETAILS SCALE 1"=2'-0"

SPECIFICATION

FOUNDATION: R.C. ISOLATED COLUMN FOOTING SUITABLY REINFORCED WITH C.M. 1:4:8 & SAND FILLING.
 BRICK WORK: BRICK WORK W. C.M. 1:6 IN BASEMENT & 1:5 IN SUPERSTRUCTURE.
 ROOFING: R.C. SLAB 1:2:4 WITH 0-8% OF REINFORCEMENTS.
 WATER PROOFING: SLOPE CONCRETE WITH BRICK JELLY IN LIME AND ONE COURSE OF FLAT TILES SET IN C.M. 1:3 MIXED WITH CRUDE OIL & POINTED WITH C.M. 1:3 & RUBBED SMOOTH.
 PLASTERING: WALLS & CEILINGS IN 12 MM THK. C.M. 1:4.
 FLOORING: GROUND FLOOR: MOSAIC FLOORING OVER A LAYER OF P.C.C. 1:4:8 & SAND FILLING. UPPER FLOORS: MOSAIC FLOORING OVER R.C. SLAB.
 FINISHES: INTERIOR PAINTED WITH DRY DISTEMPER. EXTERIOR PAINTED WITH CEMENT PAINT. DOORS & WINDOWS PAINTED WITH SYNTHETIC ENAMEL PAINT OVER A PRIMING COAT OF WOODEN PRIMER.

NO.	DESCRIPTION	QTY	UNIT	REMARKS
D1	3'-7 1/2" x 7'-8" TEAK WOOD MAIN DOOR	1	NO.	
D2	3'-0" x 7'-0" TEAK WOOD SLASH DOOR	1	NO.	
D3	3'-0" x 7'-0" T.W. GLAZED WINDOW	1	NO.	
D4	3'-0" x 7'-0" T.W. GLAZED WINDOW	1	NO.	
D5	3'-0" x 7'-0" T.W. GLAZED WINDOW	1	NO.	
D6	3'-0" x 7'-0" T.W. GLAZED WINDOW	1	NO.	
D7	3'-0" x 7'-0" T.W. GLAZED WINDOW	1	NO.	
D8	3'-0" x 7'-0" T.W. GLAZED WINDOW	1	NO.	
D9	3'-0" x 7'-0" T.W. GLAZED WINDOW	1	NO.	
D10	3'-0" x 7'-0" T.W. GLAZED WINDOW	1	NO.	
D11	3'-0" x 7'-0" T.W. GLAZED WINDOW	1	NO.	
D12	3'-0" x 7'-0" T.W. GLAZED WINDOW	1	NO.	
D13	3'-0" x 7'-0" T.W. GLAZED WINDOW	1	NO.	
D14	3'-0" x 7'-0" T.W. GLAZED WINDOW	1	NO.	
D15	3'-0" x 7'-0" T.W. GLAZED WINDOW	1	NO.	
D16	3'-0" x 7'-0" T.W. GLAZED WINDOW	1	NO.	
D17	3'-0" x 7'-0" T.W. GLAZED WINDOW	1	NO.	
D18	3'-0" x 7'-0" T.W. GLAZED WINDOW	1	NO.	
D19	3'-0" x 7'-0" T.W. GLAZED WINDOW	1	NO.	
D20	3'-0" x 7'-0" T.W. GLAZED WINDOW	1	NO.	
D21	3'-0" x 7'-0" T.W. GLAZED WINDOW	1	NO.	
D22	3'-0" x 7'-0" T.W. GLAZED WINDOW	1	NO.	
D23	3'-0" x 7'-0" T.W. GLAZED WINDOW	1	NO.	
D24	3'-0" x 7'-0" T.W. GLAZED WINDOW	1	NO.	
D25	3'-0" x 7'-0" T.W. GLAZED WINDOW	1	NO.	
D26	3'-0" x 7'-0" T.W. GLAZED WINDOW	1	NO.	
D27	3'-0" x 7'-0" T.W. GLAZED WINDOW	1	NO.	
D28	3'-0" x 7'-0" T.W. GLAZED WINDOW	1	NO.	
D29	3'-0" x 7'-0" T.W. GLAZED WINDOW	1	NO.	
D30	3'-0" x 7'-0" T.W. GLAZED WINDOW	1	NO.	
D31	3'-0" x 7'-0" T.W. GLAZED WINDOW	1	NO.	
D32	3'-0" x 7'-0" T.W. GLAZED WINDOW	1	NO.	
D33	3'-0" x 7'-0" T.W. GLAZED WINDOW	1	NO.	
D34	3'-0" x 7'-0" T.W. GLAZED WINDOW	1	NO.	
D35	3'-0" x 7'-0" T.W. GLAZED WINDOW	1	NO.	
D36	3'-0" x 7'-0" T.W. GLAZED WINDOW	1	NO.	
D37	3'-0" x 7'-0" T.W. GLAZED WINDOW	1	NO.	
D38	3'-0" x 7'-0" T.W. GLAZED WINDOW	1	NO.	
D39	3'-0" x 7'-0" T.W. GLAZED WINDOW	1	NO.	
D40	3'-0" x 7'-0" T.W. GLAZED WINDOW	1	NO.	
D41	3'-0" x 7'-0" T.W. GLAZED WINDOW	1	NO.	
D42	3'-0" x 7'-0" T.W. GLAZED WINDOW	1	NO.	
D43	3'-0" x 7'-0" T.W. GLAZED WINDOW	1	NO.	
D44	3'-0" x 7'-0" T.W. GLAZED WINDOW	1	NO.	
D45	3'-0" x 7'-0" T.W. GLAZED WINDOW	1	NO.	
D46	3'-0" x 7'-0" T.W. GLAZED WINDOW	1	NO.	
D47	3'-0" x 7'-0" T.W. GLAZED WINDOW	1	NO.	
D48	3'-0" x 7'-0" T.W. GLAZED WINDOW	1	NO.	
D49	3'-0" x 7'-0" T.W. GLAZED WINDOW	1	NO.	
D50	3'-0" x 7'-0" T.W. GLAZED WINDOW	1	NO.	
D51	3'-0" x 7'-0" T.W. GLAZED WINDOW	1	NO.	
D52	3'-0" x 7'-0" T.W. GLAZED WINDOW	1	NO.	
D53	3'-0" x 7'-0" T.W. GLAZED WINDOW	1	NO.	
D54	3'-0" x 7'-0" T.W. GLAZED WINDOW	1	NO.	
D55	3'-0" x 7'-0" T.W. GLAZED WINDOW	1	NO.	
D56	3'-0" x 7'-0" T.W. GLAZED WINDOW	1	NO.	
D57	3'-0" x 7'-0" T.W. GLAZED WINDOW	1	NO.	
D58	3'-0" x 7'-0" T.W. GLAZED WINDOW	1	NO.	
D59	3'-0" x 7'-0" T.W. GLAZED WINDOW	1	NO.	
D60	3'-0" x 7'-0" T.W. GLAZED WINDOW	1	NO.	
D61	3'-0" x 7'-0" T.W. GLAZED WINDOW	1	NO.	
D62	3'-0" x 7'-0" T.W. GLAZED WINDOW	1	NO.	
D63	3'-0" x 7'-0" T.W. GLAZED WINDOW	1	NO.	
D64	3'-0" x 7'-0" T.W. GLAZED WINDOW	1	NO.	
D65	3'-0" x 7'-0" T.W. GLAZED WINDOW	1	NO.	
D66	3'-0" x 7'-0" T.W. GLAZED WINDOW	1	NO.	
D67	3'-0" x 7'-0" T.W. GLAZED WINDOW	1	NO.	
D68	3'-0" x 7'-0" T.W. GLAZED WINDOW	1	NO.	
D69	3'-0" x 7'-0" T.W. GLAZED WINDOW	1	NO.	
D70	3'-0" x 7'-0" T.W. GLAZED WINDOW	1	NO.	
D71	3'-0" x 7'-0" T.W. GLAZED WINDOW	1	NO.	
D72	3'-0" x 7'-0" T.W. GLAZED WINDOW	1	NO.	
D73	3'-0" x 7'-0" T.W. GLAZED WINDOW	1	NO.	
D74	3'-0" x 7'-0" T.W. GLAZED WINDOW	1	NO.	
D75	3'-0" x 7'-0" T.W. GLAZED WINDOW	1	NO.	
D76	3'-0" x 7'-0" T.W. GLAZED WINDOW	1	NO.	
D77	3'-0" x 7'-0" T.W. GLAZED WINDOW	1	NO.	
D78	3'-0" x 7'-0" T.W. GLAZED WINDOW	1	NO.	
D79	3'-0" x 7'-0" T.W. GLAZED WINDOW	1	NO.	
D80	3'-0" x 7'-0" T.W. GLAZED WINDOW	1	NO.	
D81	3'-0" x 7'-0" T.W. GLAZED WINDOW	1	NO.	
D82	3'-0" x 7'-0" T.W. GLAZED WINDOW	1	NO.	
D83	3'-0" x 7'-0" T.W. GLAZED WINDOW	1	NO.	
D84	3'-0" x 7'-0" T.W. GLAZED WINDOW	1	NO.	
D85	3'-0" x 7'-0" T.W. GLAZED WINDOW	1	NO.	
D86	3'-0" x 7'-0" T.W. GLAZED WINDOW	1	NO.	
D87	3'-0" x 7'-0" T.W. GLAZED WINDOW	1	NO.	
D88	3'-0" x 7'-0" T.W. GLAZED WINDOW	1	NO.	
D89	3'-0" x 7'-0" T.W. GLAZED WINDOW	1	NO.	
D90	3'-0" x 7'-0" T.W. GLAZED WINDOW	1	NO.	
D91	3'-0" x 7'-0" T.W. GLAZED WINDOW	1	NO.	
D92	3'-0" x 7'-0" T.W. GLAZED WINDOW	1	NO.	
D93	3'-0" x 7'-0" T.W. GLAZED WINDOW	1	NO.	
D94	3'-0" x 7'-0" T.W. GLAZED WINDOW	1	NO.	
D95	3'-0" x 7'-0" T.W. GLAZED WINDOW	1	NO.	
D96	3'-0" x 7'-0" T.W. GLAZED WINDOW	1	NO.	
D97	3'-0" x 7'-0" T.W. GLAZED WINDOW	1	NO.	
D98	3'-0" x 7'-0" T.W. GLAZED WINDOW	1	NO.	
D99	3'-0" x 7'-0" T.W. GLAZED WINDOW	1	NO.	
D100	3'-0" x 7'-0" T.W. GLAZED WINDOW	1	NO.	

COLOR INDEX

- PROPOSED WORK (EXISTING TO BE SANCTIONED)
- ROAD
- BOUNDARY LINE
- DRAINAGE LINE
- DRINKING WATER LINE
- EXISTING

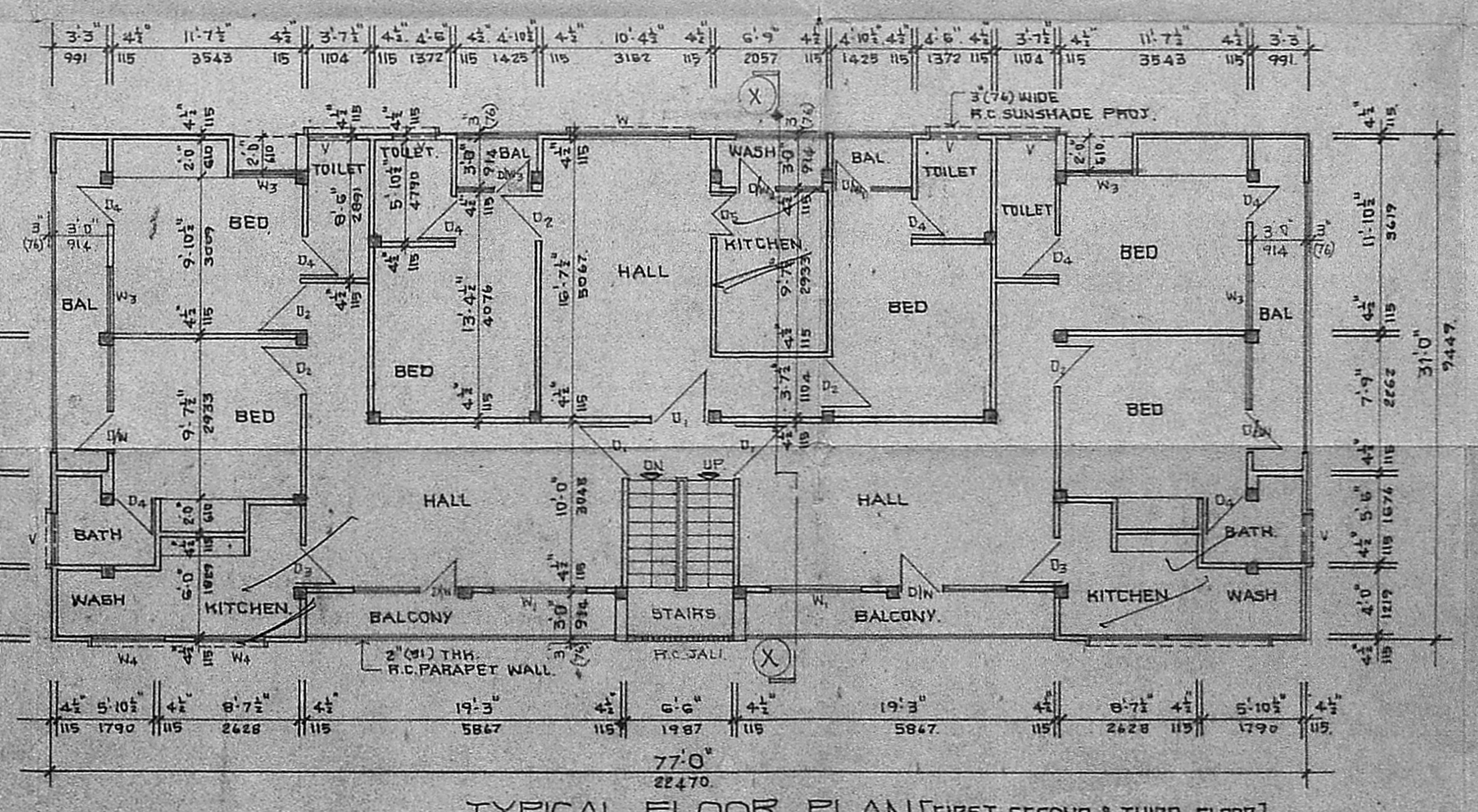
LICENSED SURVEYOR:
SATNAM SINGH B.Arch. AND
 architect & interior designer
 146 Purasawalkam High Road
 Kollu, Madras - 600 010

OWNER:
 REGULARISATION OF CONSTRUCTION OF EXISTING BUILDING AT NO. 14, SHERFUDIN STREET, CHOLAMEDU, MADRAS - 54, T.S. NO. 53, BLOCK NO. 20, PULIYUR VILLAGE, DIVISION NO. 73.

REGULARISATION OF CONSTRUCTION OF EXISTING BUILDING AT NO. 14, SHERFUDIN STREET, CHOLAMEDU, MADRAS - 54, T.S. NO. 53, BLOCK NO. 20, PULIYUR VILLAGE, DIVISION NO. 73.

CORPORATION DRAWING

SCALE: 1"=80' [1:100] DATE: 23-6-89
 DRAWN: [Signature] CHECKED: [Signature]
 ARCHITECT: SATNAM SINGH B.Arch. AND ARCHITECT & INTERIOR DESIGNER, 146 PURASAWALKAM HIGH ROAD, KOLLU, MADRAS - 600 010.
 JOB NO: 161
 DRS NO: 12



TYPICAL FLOOR PLAN [FIRST, SECOND & THIRD FLOOR]